

Free eNewsletter
 Enter your E-mail

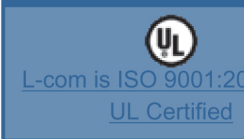
- Shop By Type**
- Cable Assemblies
 - Adapters
 - Connectors
 - Rack Panels
 - Bulk Cable
 - Tools
 - Switch Boxes
 - Network Cards
 - Hubs & Switches
 - Converters & Transceivers
 - KVM Switches
 - Antennas

- Overstock/Sale Items
- Top 10 Products

- Shop By Category**
- IEEE-488 GPIB
 - Coaxial
 - Monitor, Video
 - Fiber Optic
 - D-Subminiature
 - Modular
 - USB, DIN, Firewire, SCSI, and Others
 - Wireless Infrastructure
 - Weatherproof Enclosures
 - Networking and Other Equipment

- Product Wizards**
- Cable Assemblies
 - Adapters
 - Connectors
 - Rack Panels
 - Tools
 - Switch Boxes
 - Network Cards
 - Hubs or Switches
 - Ethernet Converters
 - KVM Switches

- Technical Resources**
- FAQs
 - Connector Chart
 - Glossary
 - Tutorials
 - Tips and Videos
 - White Papers
 - Catalog Downloads
 - eNewsletter Archive



You Are Here: [Home](#) > [D-Subminiature](#) > [Adapters, Couplers, Splitters](#) > [Socket Savers](#) > [DGB_MF](#) > **DGB50MF**

Slimline Socket Saver, DB50 Male / Female

Features for this product

- Wired straight through; Extends the life of frequently mated D-sub connectors
- Fully shielded to protect against EMI (electromagnetic interference)
- Gold plated contacts provide reliable connections with repeated mating cycles
- UL grade 94V-0 connector insulator satisfies flammability requirements
- Available in all standard D-sub connector sizes; Male to female genders



Dual-purpose slimline socket savers extend the life by taking the abuse of frequently mated D-sub connectors used on expensive cables and ports. They are also panel mountable to pass cables through a bulkhead (See panel mount tips). The low profile design reduces leverage strain on overstressed computer ports and is fully shielded for electrically noisy environments. Universally designed for serial or parallel applications. Quantity pricing available, please contact your L-com Sales Representative.

Details for this D-Subminiature product

| | |
|-------------------------------|---|
| L-com Item # | DGB50MF |
| Manufacturer | L-com |
| ASIN # (More) | B000A8QIPI |
| UPC # (More) | 822335019881 |
| RoHS Status | RoHS Compliant <input checked="" type="checkbox"/> (More) |

- [Tip](#)
- [Video Clip](#)
- [Video Clip](#)
- [Video Clip](#)
- [Catalog Page](#)
- [Catalog Page](#)
- [2D Drawing \(.pdf\)](#)
- [3D CAD Model \(.step\)](#)

(Login required for 2D & 3D files)

| Item # | Description | 1-9 | 10-24 | 25-99 | 100-249 | 250-499 |
|--------|-------------|-----|-------|-------|---------|---------|
|--------|-------------|-----|-------|-------|---------|---------|

Waterproof D-Sub Connectors and Backshells - IEC IP67 Rated

Harsh outdoor or indoor environments can destroy electronic equipment. Standard D-Sub connectors are not intended to withstand contaminants such as water and dust. By utilizing tough ABS housings, rubber gaskets and silicone insulating rings, these products achieve IEC IP67 ratings. Panel mounted D-Sub solder connectors are rear mounted and fit into standard D-Sub holes. Backshells conform to a variety of cable diameters by adjusting the sealing nut. L-com will manufacture cable assemblies using waterproof backshells with modest minimum requirements.

Waterproof D-Sub Panel Mount Solder Connectors

These solder cup connectors are available in male or female genders and DB9, DB15, DB25 and HD15 sizes. They will accommodate wire ranges from 30 - 20AWG. Construction features gold plated brass contacts, nickel plated steel shells and a silicone insulating ring. Maximum recommended panel thickness is 0.078".

| | |
|---------------------------|--|
| WPSP9P | Waterproof Panel Mount Solder Cup D-Sub Connector, DB9M |
| WPSP9S | Waterproof Panel Mount Solder Cup D-Sub Connector, DB9F |
| WPSP15P | Waterproof Panel Mount Solder Cup D-Sub Connector, DB15M |
| WPSP15S | Waterproof Panel Mount Solder Cup D-Sub Connector, DB15F |
| WPSP25P | Waterproof Panel Mount Solder Cup D-Sub Connector, DB25M |
| WPSP25S | Waterproof Panel Mount Solder Cup D-Sub Connector, DB25F |
| WPSPDH15P | Waterproof Panel Mount Solder Cup D-Sub Connector, HD15M |
| WPSPDH15S | Waterproof Panel Mount Solder Cup D-Sub Connector, HD15F |

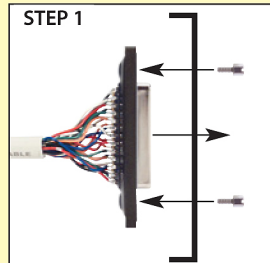
Waterproof D-Sub Backshell Kits

These backshell kits include solder cup connectors and are also available in male or female genders and DB9, DB15, DB25 and HD15 sizes. The connectors will accommodate wire ranges from 30 - 20AWG. Backshell construction features ABS housings, nylon seals, nickel plated brass thumbscrews and rubber sealing gaskets to insure IEC IP67 rating. Color: Black.

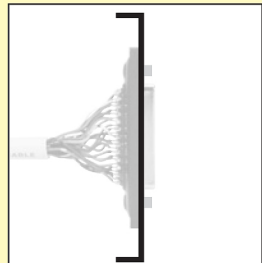
| | |
|------------------------------|---------------------------------------|
| WPDB9P-KIT | Waterproof D-Sub Backshell Kit, DB9M |
| WPDB9S-KIT | Waterproof D-Sub Backshell Kit, DB9F |
| WPDB15P-KIT | Waterproof D-Sub Backshell Kit, DB15M |
| WPDB15S-KIT | Waterproof D-Sub Backshell Kit, DB15F |
| WPDB25P-KIT | Waterproof D-Sub Backshell Kit, DB25M |
| WPDB25S-KIT | Waterproof D-Sub Backshell Kit, DB25F |
| WPHDB15P-KIT | Waterproof D-Sub Backshell Kit, HD15M |
| WPHDB15S-KIT | Waterproof D-Sub Backshell Kit, HD15F |



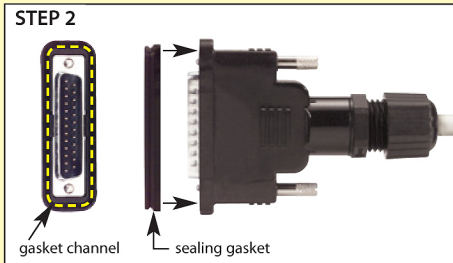
Tip How to apply panel mount waterproof D-Sub products



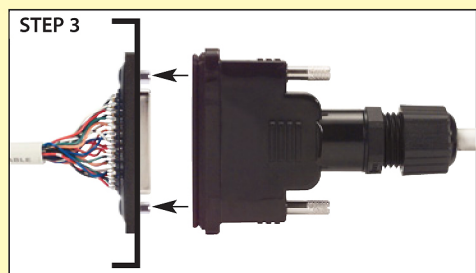
Mount D-Sub connector from inside of panel/enclosure using hex jack screws provided.



Maximum panel thickness is 0.078"



Apply sealing gasket (supplied with backshell kit) in backshell channel around perimeter of D-Sub connector.



Mate connectors and secure backshell thumbscrews to threaded jackscrews.



Waterproof IP67 rating is achieved by gaskets/seals in backshell and silicone seal ring in connector.